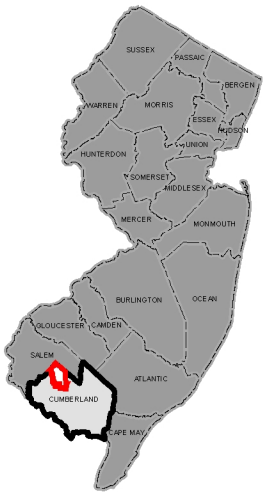


12.0 FIGURES

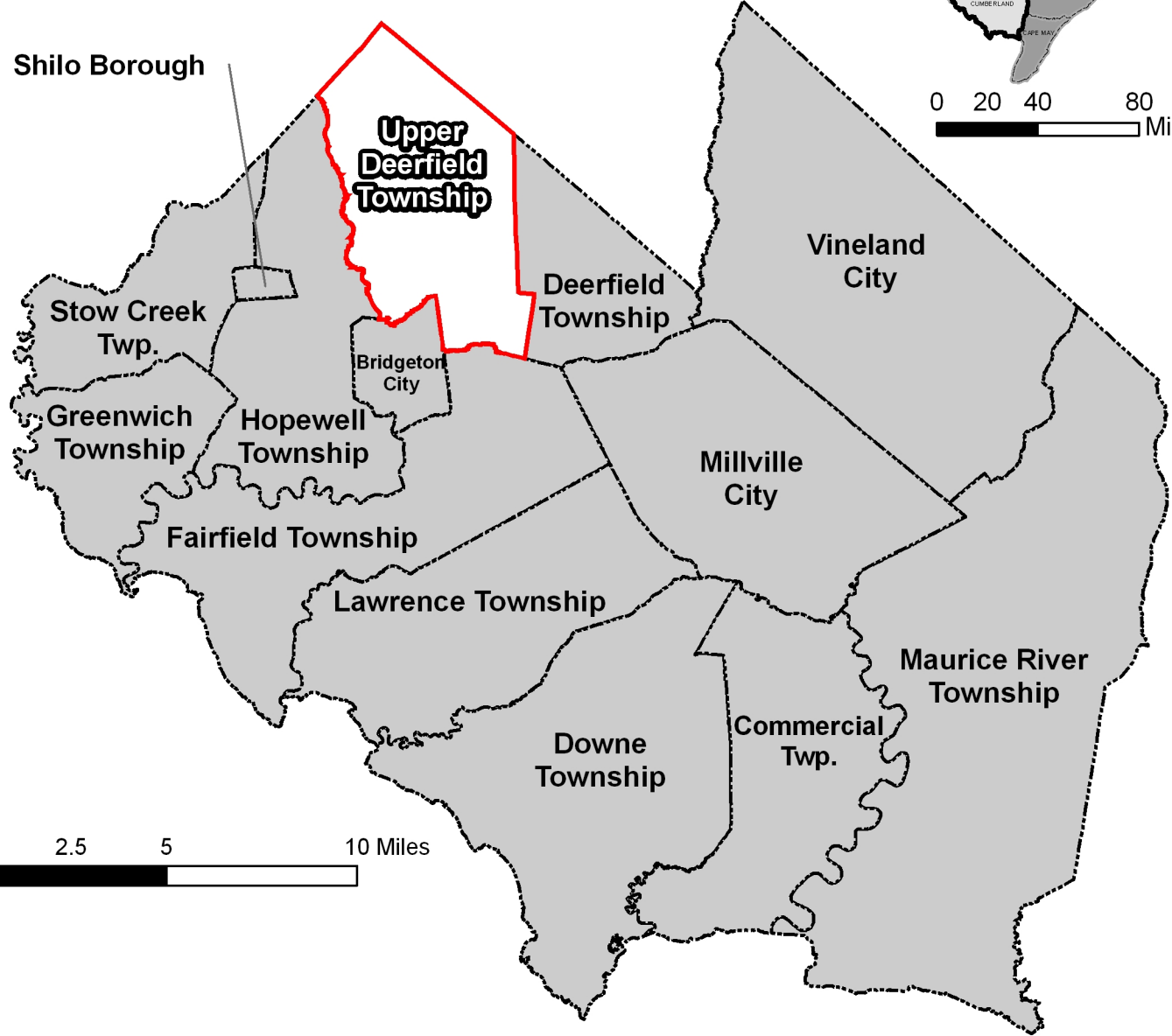
Figure 1	Location Map
Figure 2	Geology
Figure 3	Wellhead Protection Areas and Known Contaminated Sites
Figure 4	USGS Topographic Map
Figure 5	Soil Series
Figure 6	Slopes
Figure 7	Watersheds
Figure 8	Surface Water Resources
Figure 9	HUC-14 Subwatersheds
Figure 10	Floodplains
Figure 11	Wetlands
Figure 12	Forest and Grassland Habitat
Figure 13	Potential Vernal Pool Habitat
Figure 14	Land Use/Land Cover
Figure 15	Bald Eagle Foraging Habitat
Figure 16	Forested and Emergent Wetland Habitat

Location Map



0 20 40 80 Miles

Shilo Borough



0 2.5 5 10 Miles

Figure 1

Upper Deerfield Township
Cumberland County, New Jersey



AMY S. GREENE
ENVIRONMENTAL
CONSULTANTS, INC.

Geology

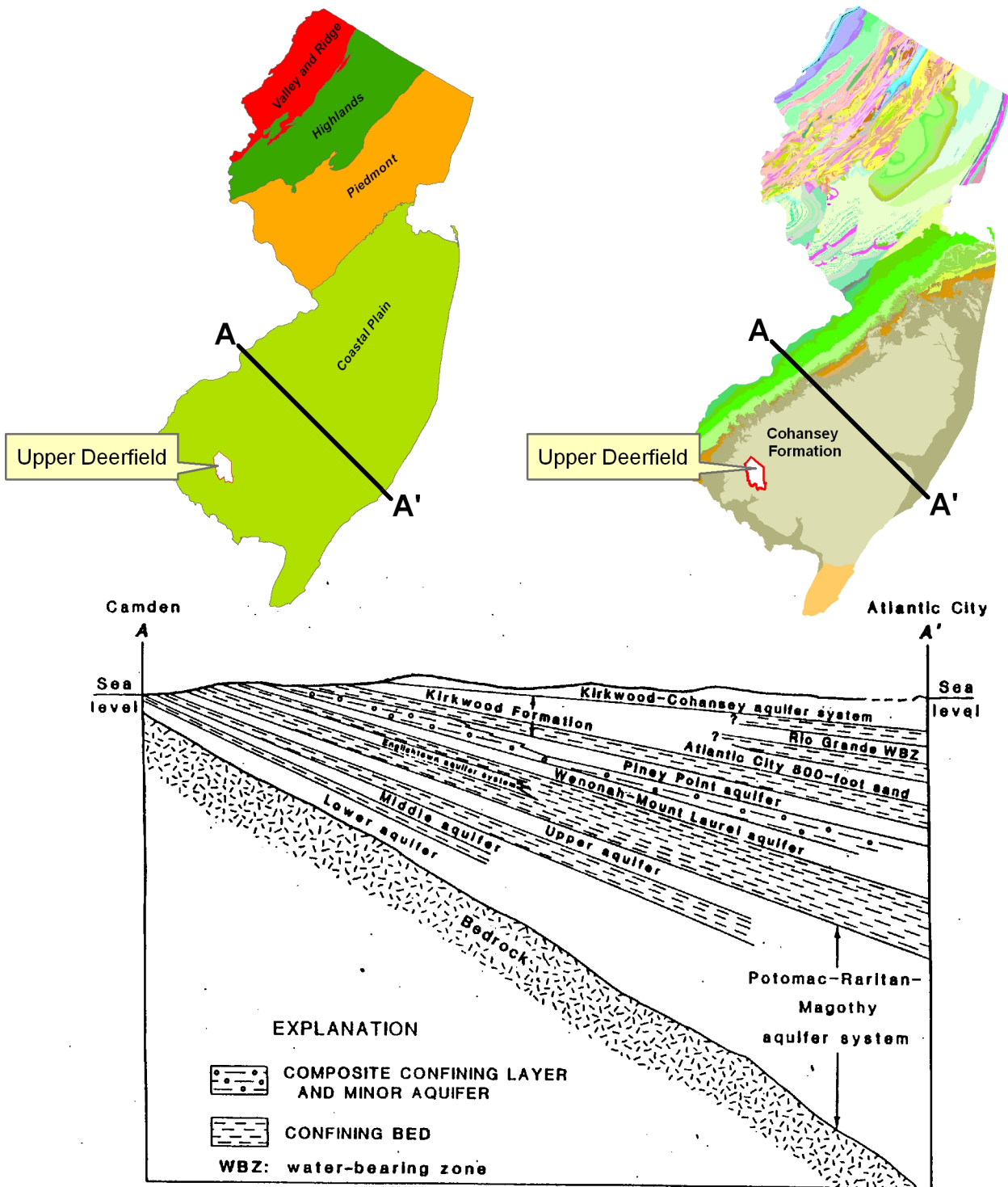
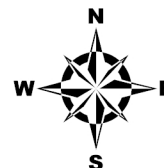


Figure 2

Generalized Geohydrologic Section of the Coastal Plain of New Jersey

Upper Deerfield Township
Cumberland County, New Jersey



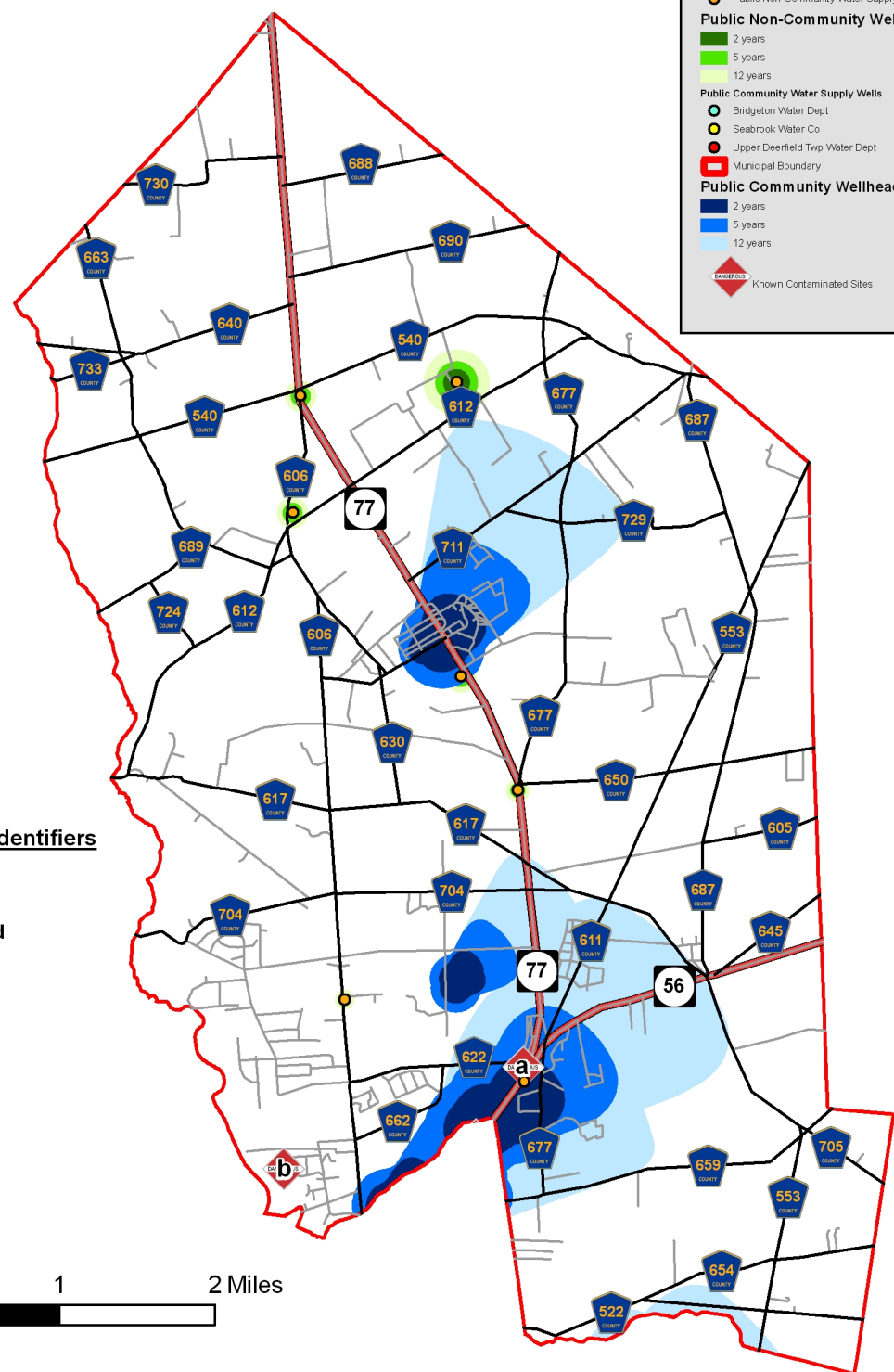
AMY S. GREENE
ENVIRONMENTAL
CONSULTANTS, INC.

SOURCES: Municipality Boundary, Geology and Physiographic Provinces of New Jersey coverages are from NJGS, NJDEP digital GIS data. Generalized Cross Section obtained from: Geological Investigations of the Coastal Plain of Southern New Jersey, Part 2A, Hydrogeology and the Coastal Plain, ed Claude M. Epstein, sponsored by Stockton State College, Pomona, NJ 1986. This map was developed using NJDEP GIS digital data, but this secondary product has not been verified, and is not state-authorized.

Wellhead Protection Areas and Known Contaminated Sites

Legend

- Local Roads
- County Highways
- State Highways
- Public Non-Community Water Supply Wells
- Public Non-Community Wellhead Protection Areas**
 - 2 years
 - 5 years
 - 12 years
- Public Community Water Supply Wells**
 - Bridgeton Water Dept
 - Seabrook Water Co
 - Upper Deerfield Twp. Water Dept
- Municipal Boundary
- Public Community Wellhead Protection Areas**
 - 2 years
 - 5 years
 - 12 years
- Known Contaminated Sites



Contaminated Site Identifiers

- a) Hess Station
- b) 53 Sunset Lake Road

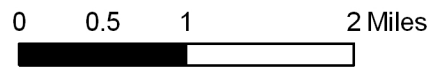
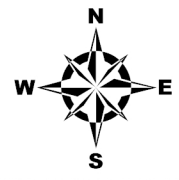


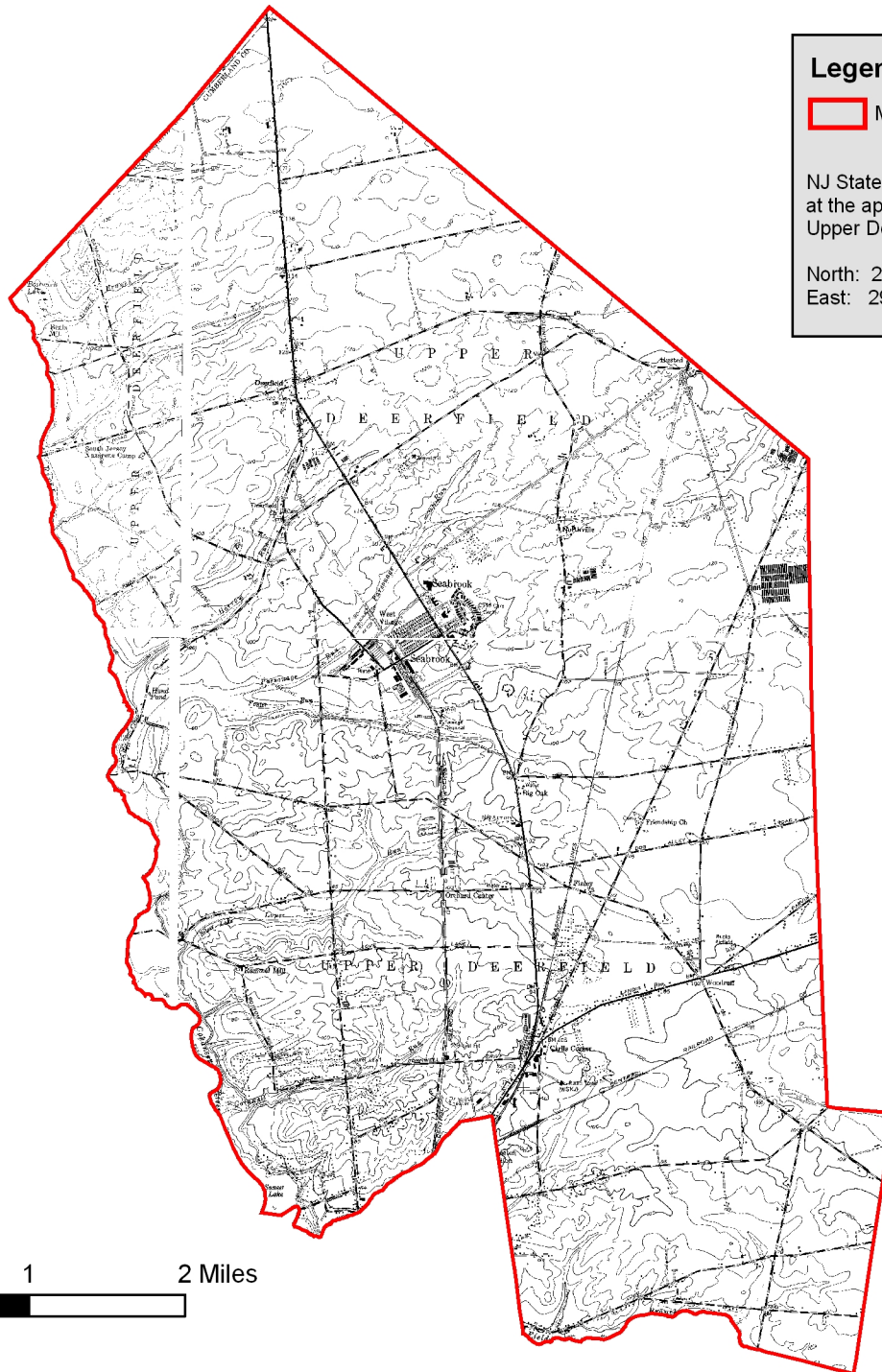
Figure 3

**Upper Deerfield Township
Cumberland County, New Jersey**



SOURCES: Municipal Boundary, Roads, Known Contaminated Sites, Wells and Wellhead Protection Areas are from NJDEP GIS data. This map was developed using NJDEP and USDA GIS digital data, but this secondary product has not been verified by NJDEP or USDA and is not state-authorized.

USGS Topographic Map



Legend

 Municipal Boundary

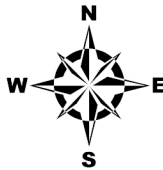
NJ State Plane Coordinates
at the approximate center of
Upper Deerfield Township:

North: 241,241'
East: 290,033'

0 1 2 Miles

Figure 4

Upper Deerfield Township
Cumberland County, New Jersey



 **AMY S. GREENE**
ENVIRONMENTAL
CONSULTANTS, INC.

SOURCES: Municipality Boundary is from NJDEP digital GIS data. Topographic Mapping is from USGS.

Soil Series

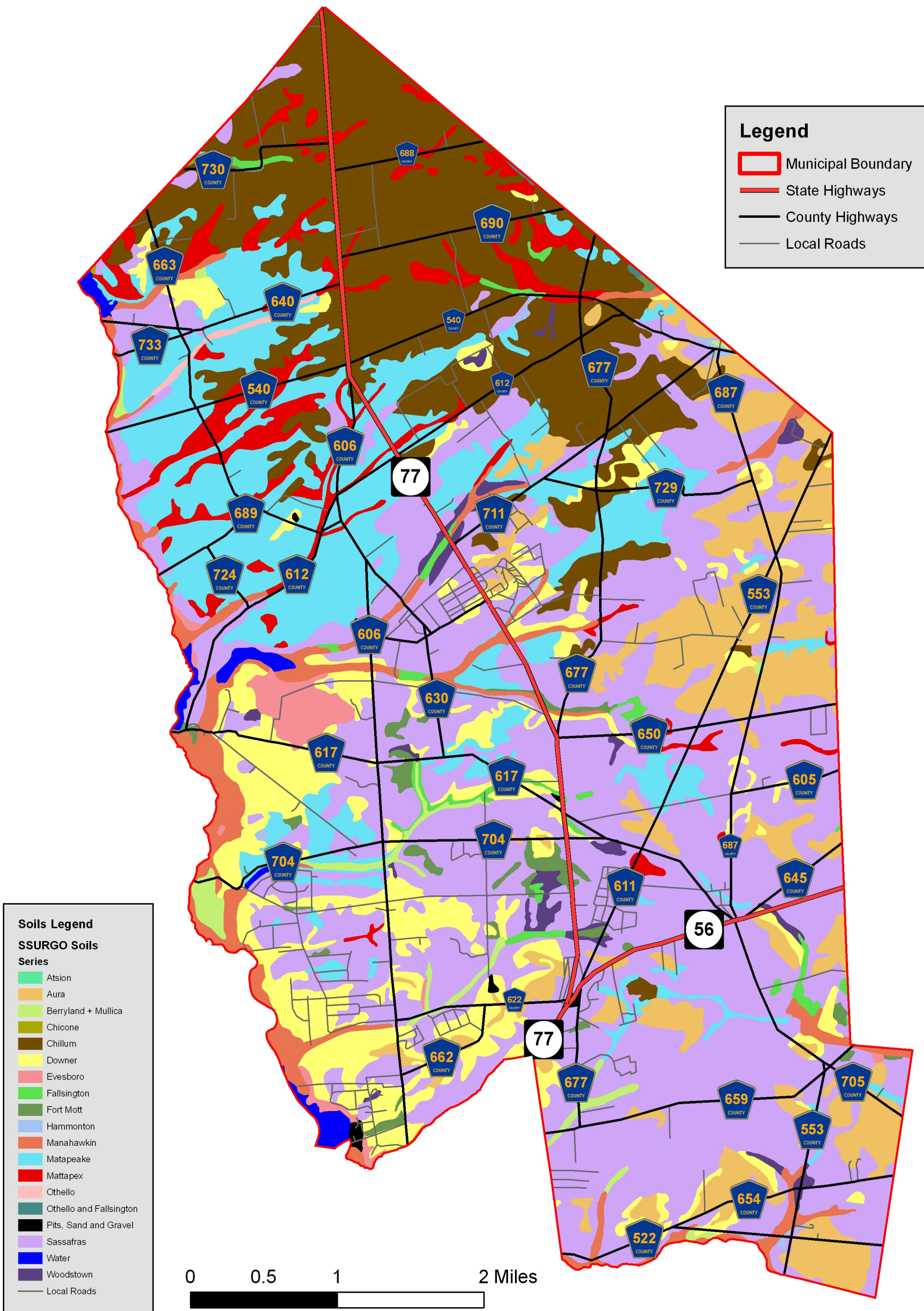
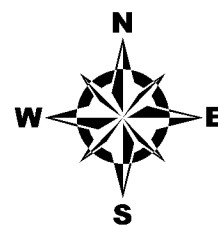


Figure 5

Upper Deerfield Township
Cumberland County, New Jersey



AMY S. GREENE
ENVIRONMENTAL
CONSULTANTS, INC.

SOURCES: Municipality Boundary is from NJDEP digital GIS data. Soils data from USDA, SSURGO Soils, GIS data. This map was developed using NJDEP and USDA GIS digital data, but this secondary product has not been verified by NJDEP or USDA and is not state-authorized.

Slopes

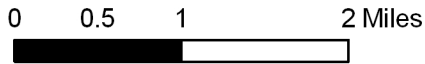
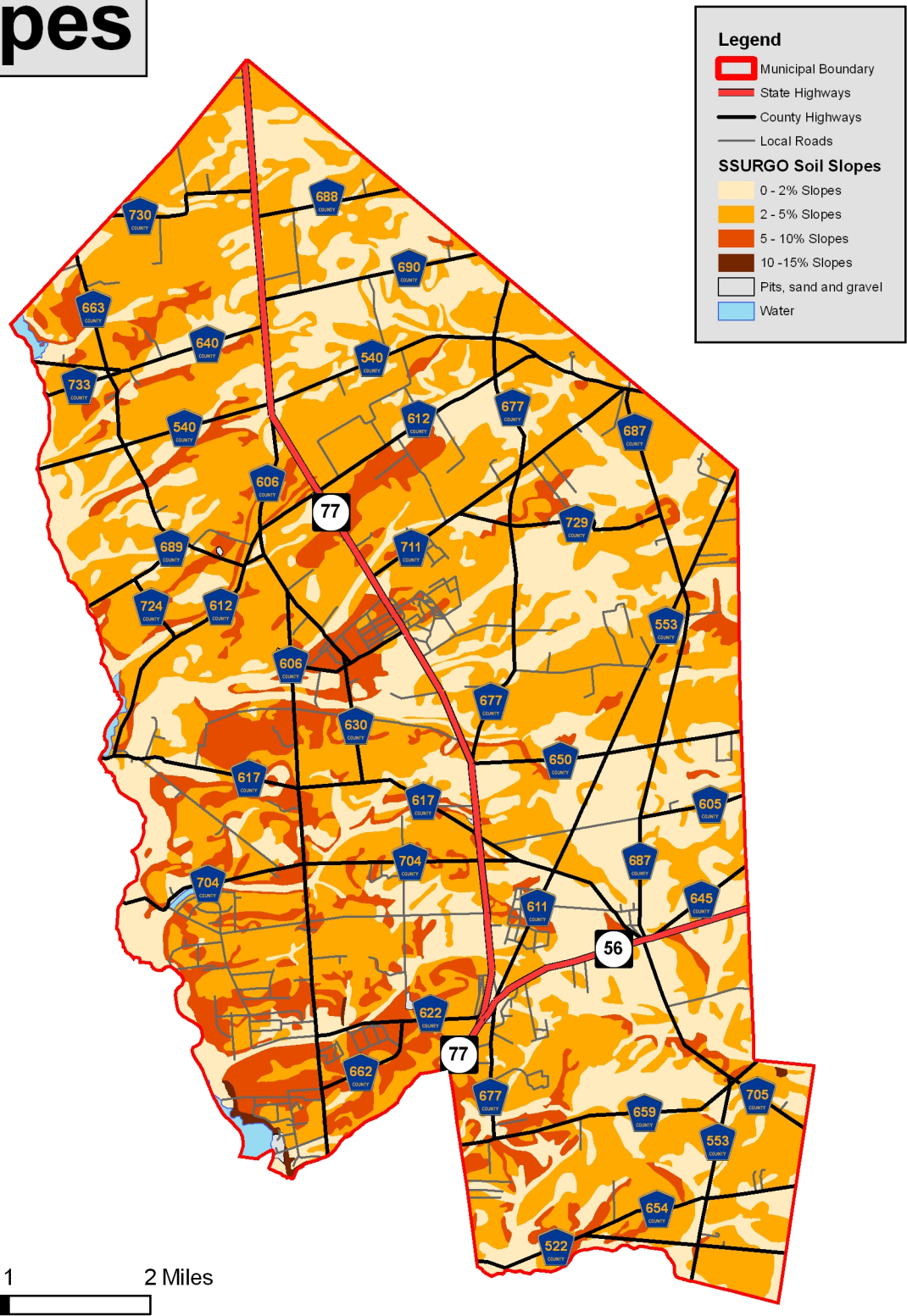


Figure 6
Upper Deerfield Township
Cumberland County, New Jersey



AMY S. GREENE
 ENVIRONMENTAL
 CONSULTANTS, INC.

SOURCES: Municipality Boundary is from NJDEP digital GIS data. Soils data from USDA, SSURGO Soils, GIS data. This map was developed using NJDEP and USDA GIS digital data, but this secondary product has not been verified by NJDEP or USDA and is not state-authorized.

Watersheds

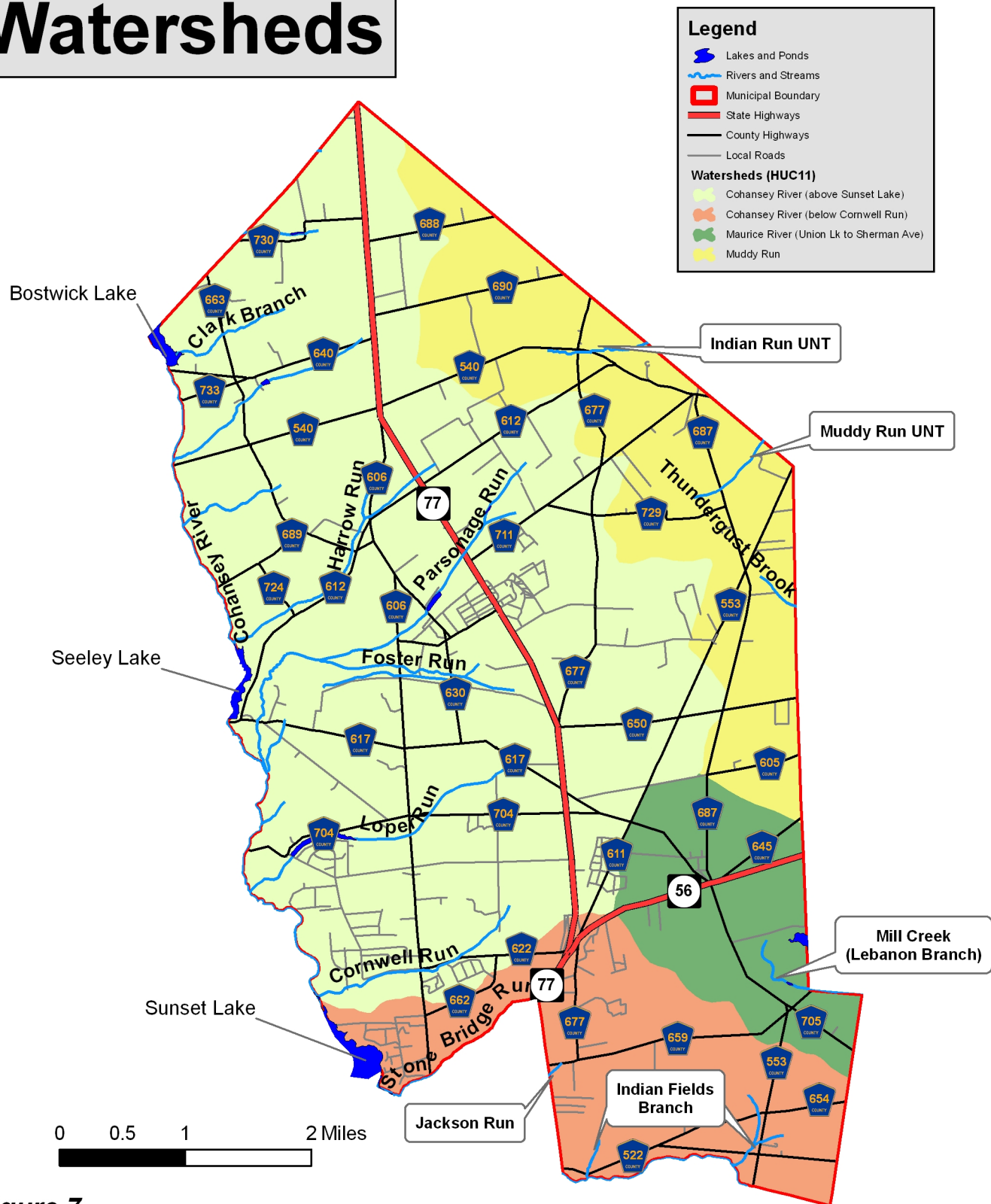


Figure 7
Upper Deerfield Township
Cumberland County, New Jersey



SOURCES: Municipality Boundary is from NJDEP digital GIS data. Soils data from NJDEP GIS data. This map was developed using NJDEP and USDA GIS digital data, but this secondary product has not been verified by NJDEP or USDA and is not state-authorized.