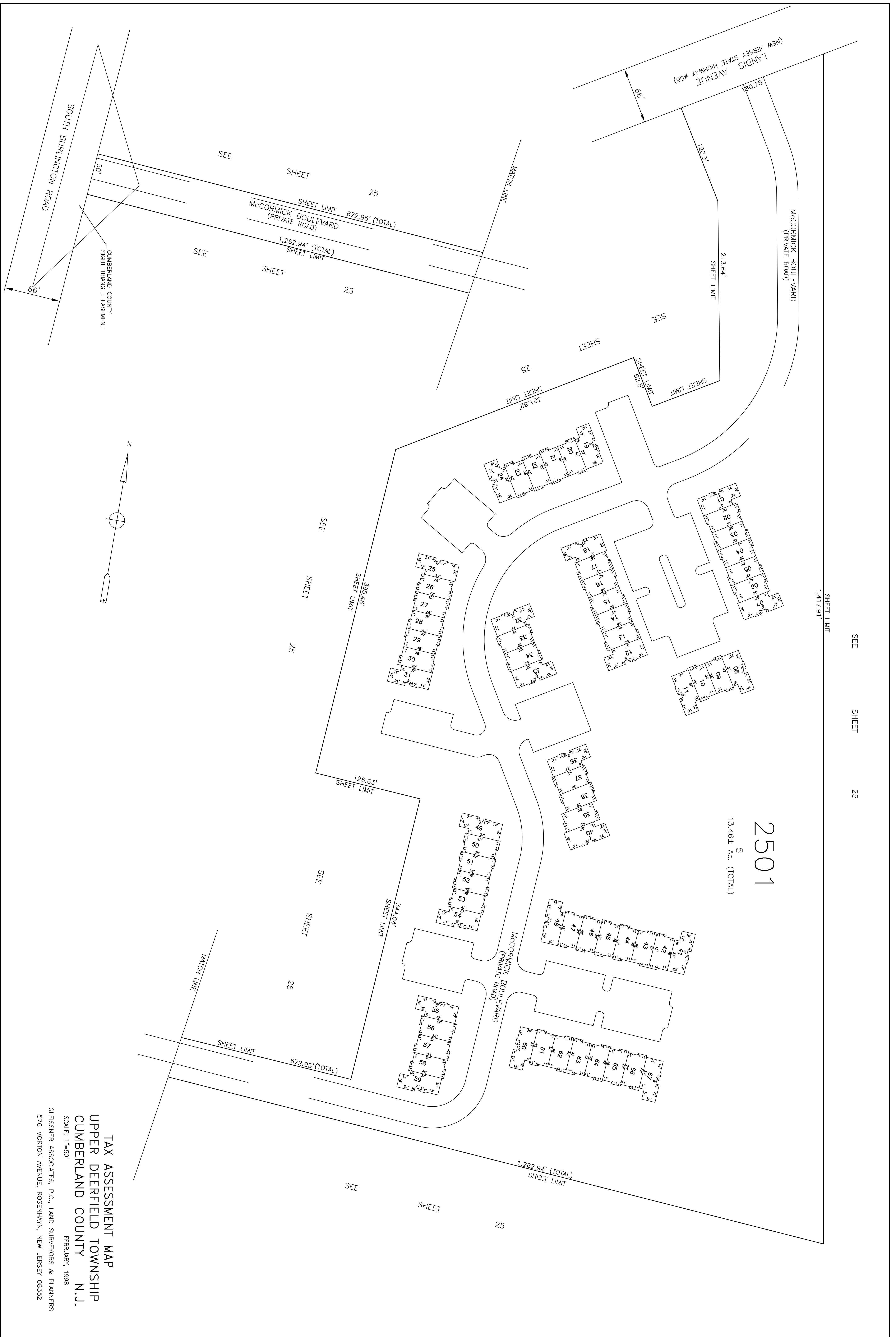


SEE SHEET 25

SHEET LIMIT
1,417.91'

2501
5
13.46± Ac. (TOTAL)



TAX ASSESSMENT MAP
 UPPER DEERFIELD TOWNSHIP
 CUMBERLAND COUNTY
 N.J.
 FEBRUARY, 1998
 SCALE: 1"=50'

GLEISSNER ASSOCIATES, P.C., LAND SURVEYORS & PLANNERS
 576 MORTON AVENUE, ROSENHAYN, NEW JERSEY 08352