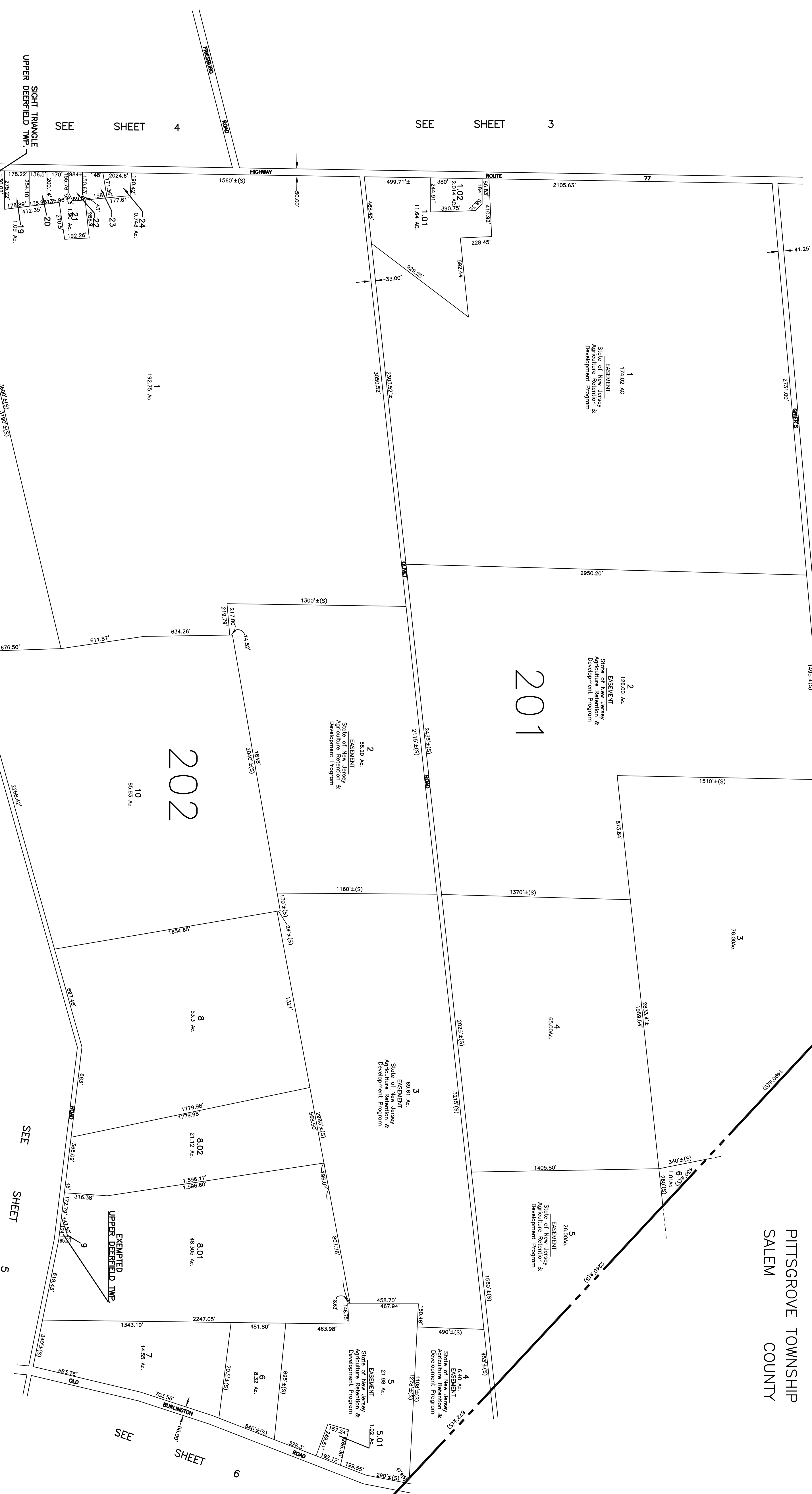
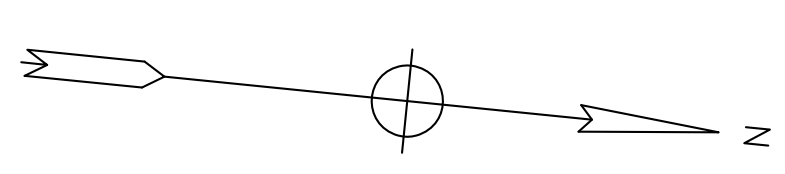


PITTSBURGH TOWNSHIP
SALEM COUNTY



SEE SHEET 1

SEE SHEET 3

SEE SHEET 4

SEE SHEET 5

SEE SHEET 5

SEE SHEET 5

SEE SHEET 5

SEE SHEET 5

SEE SHEET 5

SEE SHEET 5

NOTE
This sheet is a scanned copy of the Tax Map originally prepared by Albert A. Fraulinger, Jr., dated January 14, 1972. The original approved map is on file in the office of the Upper Deerfield Township Tax Assessor.

TAX ASSESSMENT MAP
UPPER DEERFIELD TOWNSHIP
CUMBERLAND COUNTY N.J.
OCTOBER, 1971
ALBERT A. FRAULINGER JR. CONSULTING ENGINEER
629 SHILOH PIKE, BRIDGETON, NEW JERSEY 08302