

SUNSET LAKE

HOPWELL TOWNSHIP CUMBERLAND COUNTY

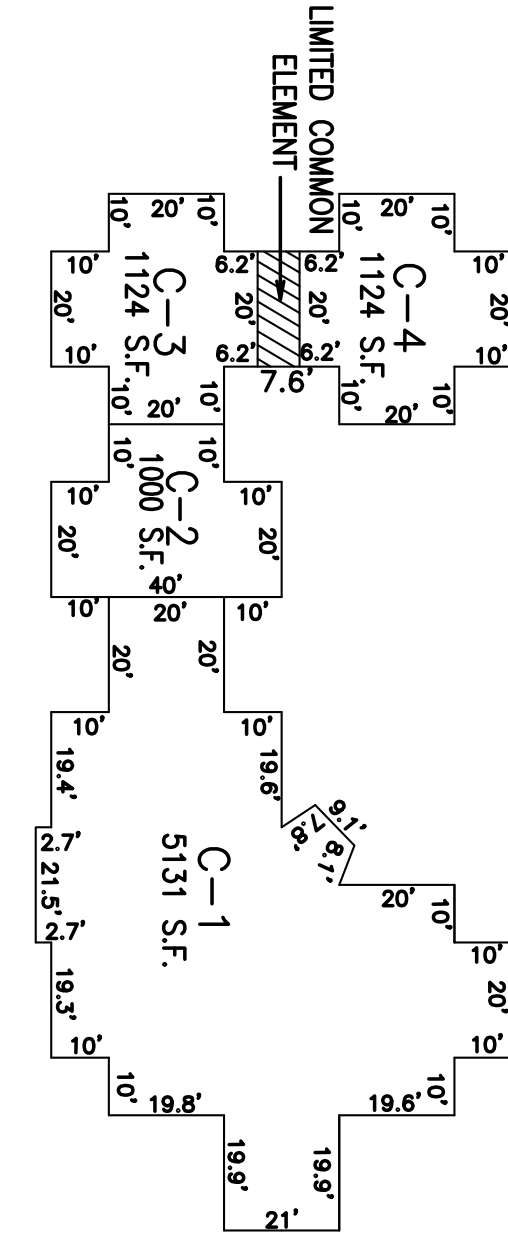
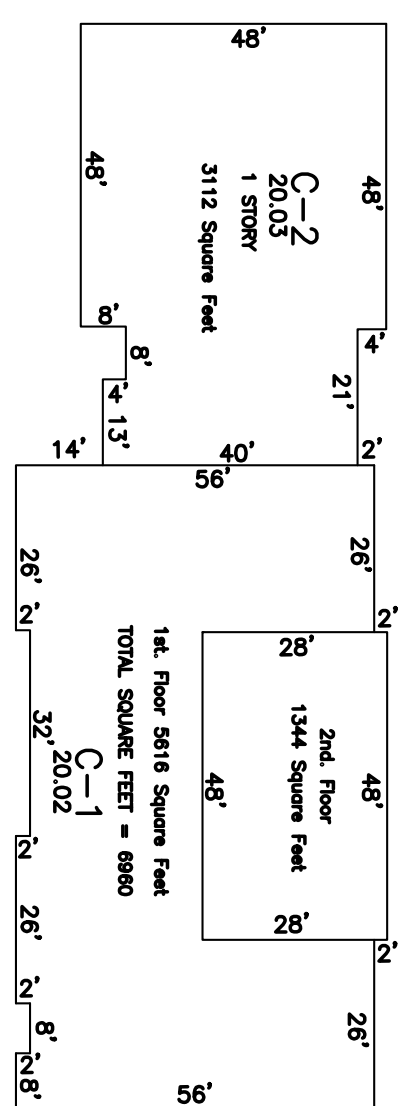
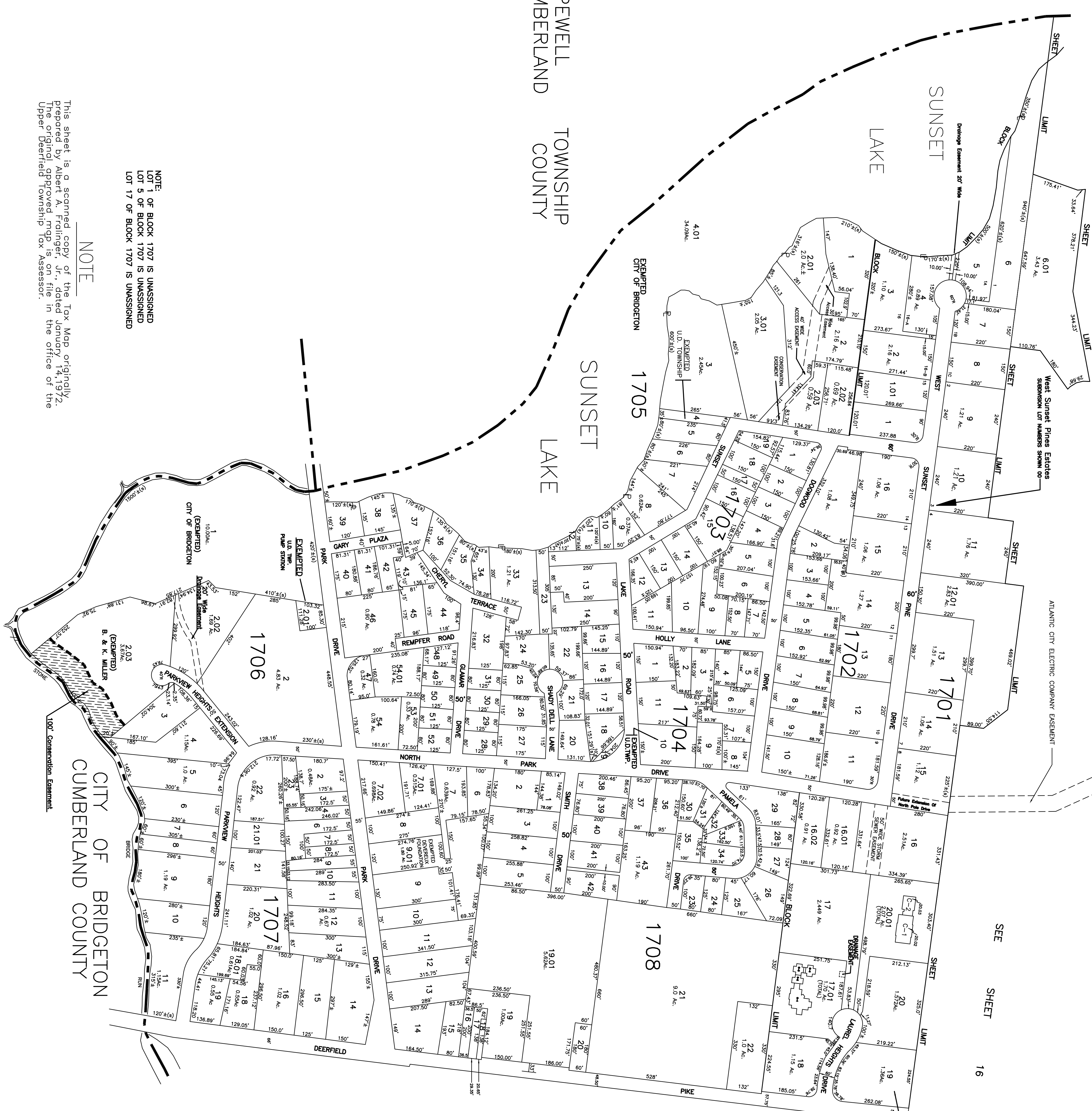
TOWNSHIP CUMBERLAND COUNTY

SUNSET LAKE

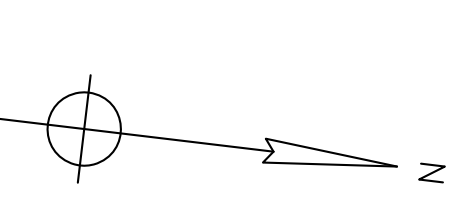
NOTE: LOT 1 OF BLOCK 1707 IS UNASSIGNED LOT 5 OF BLOCK 1707 IS UNASSIGNED LOT 17 OF BLOCK 1707 IS UNASSIGNED

NOTE

This sheet is a scanned copy of the Tax Map originally prepared by Albert A. Frauniger, Jr., dated January 14, 1972. The original approved map is on file in the office of the Upper Deerfield Township Tax Assessor.



SEE SHEET 18



CITY OF BRIDGETON CUMBERLAND COUNTY

TAX ASSESSMENT MAP UPPER DEERFIELD TOWNSHIP CUMBERLAND COUNTY N.J.

ALBERT A. FRAUNIGER JR. CONSULTING ENGINEER 629 SHILOH PIKE, BRIDGETON, NEW JERSEY 08302

OCTOBER, 1971