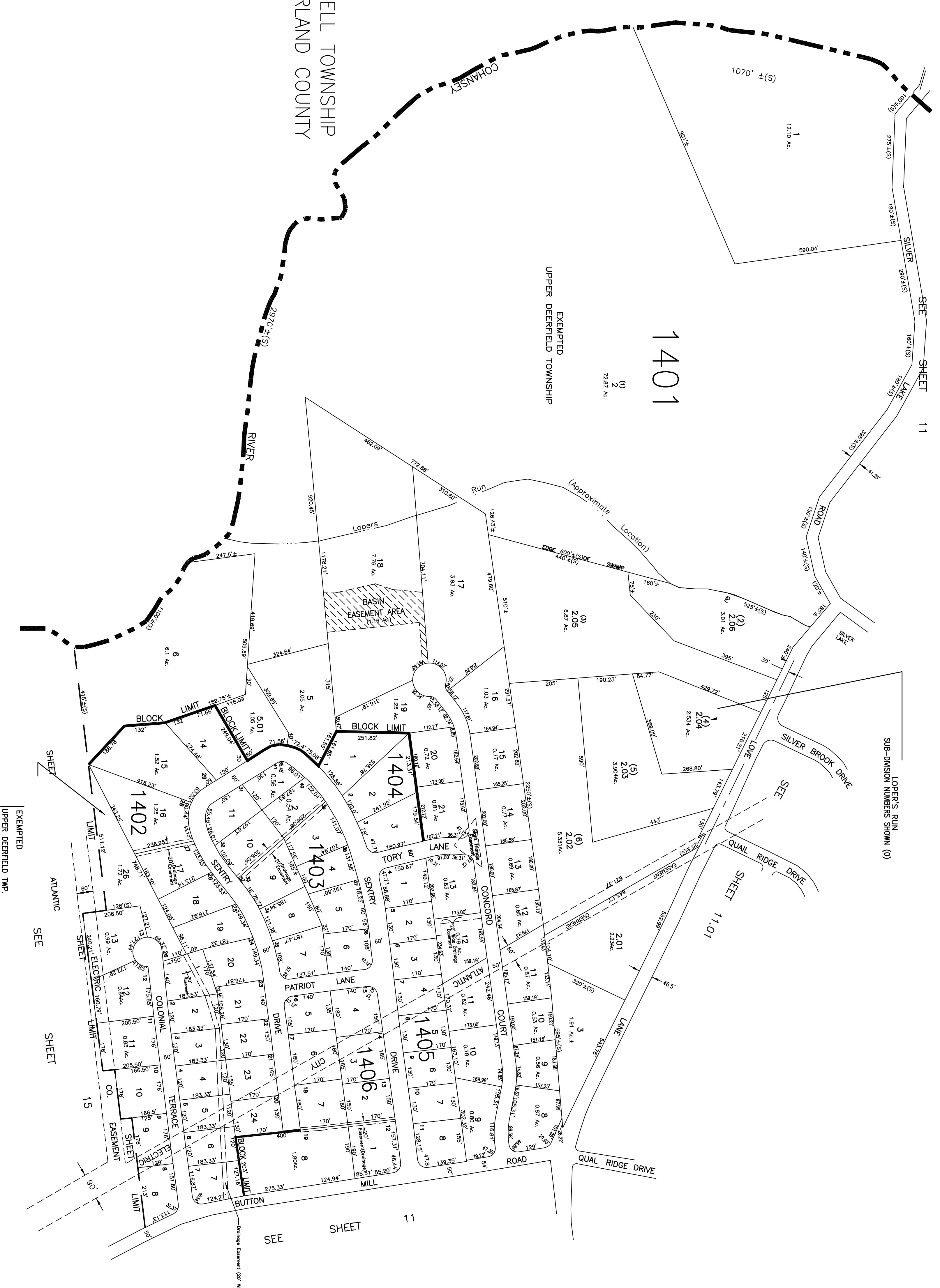


HOPEWELL TOWNSHIP
CUMBERLAND COUNTY

1401



NOTE:
BLOCK 1401, LOT 4 IS UNASSIGNED
BLOCK 1401, LOT 7 IS UNASSIGNED

NOTE:
This sheet is a scanned copy of the Tax Map originally prepared by Albert A. Fraulinger, Jr., dated January 14, 1972. The original approved map is on file in the office of the Upper Deerfield Township Tax Assessor.

TAX ASSESSMENT MAP
UPPER DEERFIELD TOWNSHIP
CUMBERLAND COUNTY

ALBERT A. FRAULINGER JR. CONSULTING ENGINEER
629 SHILOH PIKE, BRIDGETON, NEW JERSEY 08302
SCALE: 1"=200'
SEPTEMBER, 1973