

SEE SHEET 8

SCHOOL LANE
E. PARSONAGE RD.

STATE HIGHWAY

ROUTE 77

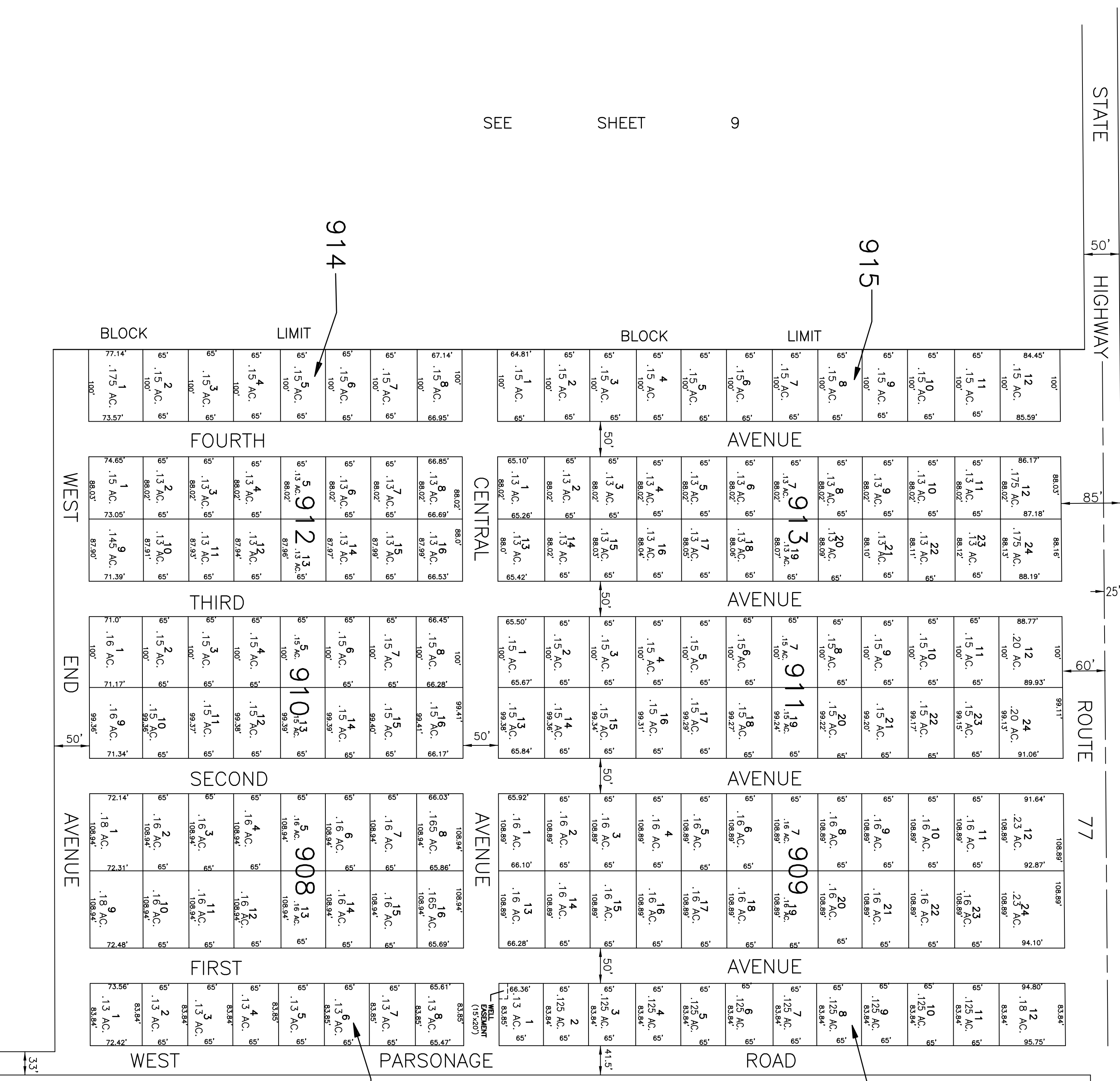


915

907

SEE SHEET 9

SEE SHEET 9



NOTE

This sheet is a scanned copy of the Tax Map originally prepared by Albert A. Frainger, Jr., dated January 14, 1972. The original approved map is on file in the office of the Upper Deerfield Township Tax Assessor.

SEE SHEET 9

TAX ASSESSMENT MAP

UPPER DEERFIELD TOWNSHIP
CUMBERLAND COUNTY N.J.
SCALE: 1"=100'
MARCH, 1979
ALBERT A. FRAINGER JR. CONSULTING ENGINEER
629 SHILOH PIKE, BRIDGETON, NEW JERSEY 08302