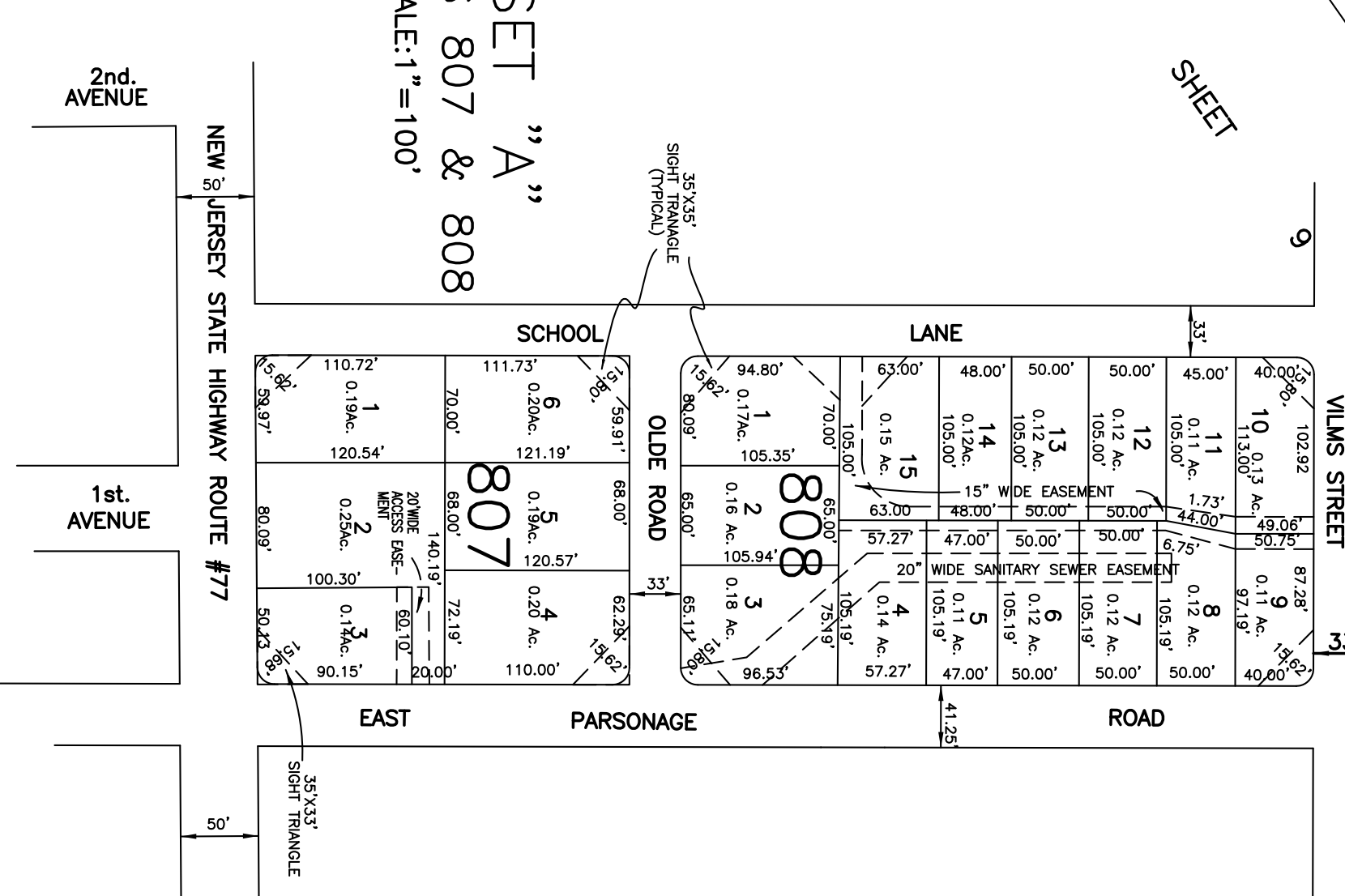


NOTE

This sheet is a scanned copy of the Tax Map originally prepared by Albert A. Fralinger, Jr., dated January 14, 1972. The original approved map is on file in the office of the Upper Deerfield Township Tax Assessor.

BLOCK 813, LOT 1 IS UNASSIGNED

INSET "A"
BLOCKS 807 & 808
SCALE: 1"=100'



TAX ASSESSMENT MAP
UPPER DEERFIELD TOWNSHIP
CUMBERLAND COUNTY
SCALE: 1"=400'

ALBERT A. FRALINGER JR. CONSULTING ENGINEER
629 SHILOH PIKE, BRIDGETON, NEW JERSEY 08302
OCTOBER, 1971