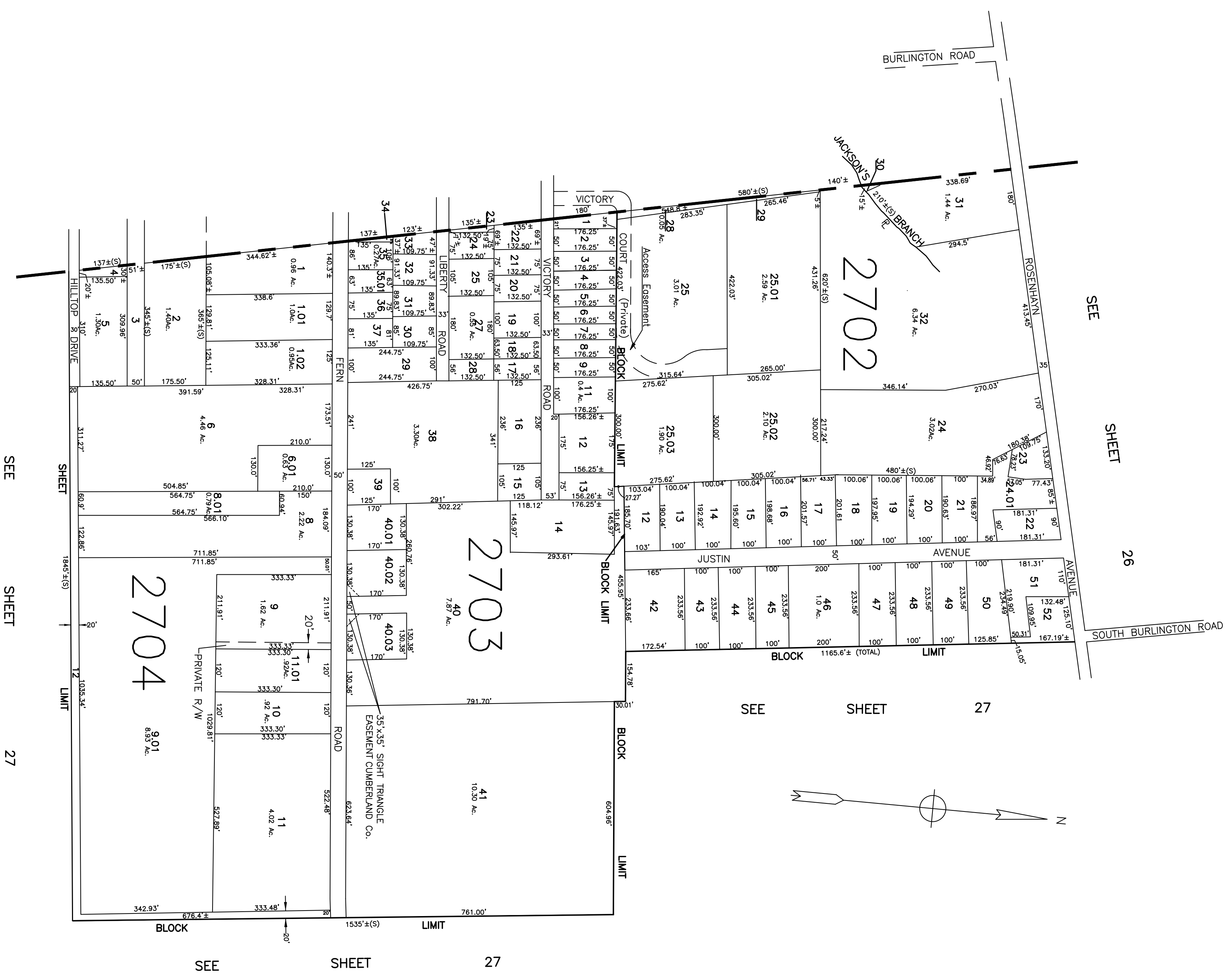


CITY OF BRIDGETON
CUMBERLAND COUNTY



NOTE

Lot 10, Block 2703 is Unassigned
Lots 1-11, Block 2702 are Unassigned

NOTE

This sheet is a scanned copy of the Tax Map originally prepared by Albert A. Frainger, Jr., dated January 14, 1972. The original approved map is on file in the office of the Upper Deerfield Township Tax Assessor.

TAX ASSESSMENT MAP
UPPER DEERFIELD TOWNSHIP
CUMBERLAND COUNTY N.J.

SCALE: 1"=200'
AUGUST, 1997
ALBERT A. FRAINGER JR. CONSULTING ENGINEER
629 SHILOH PIKE, BRIDGETON, NEW JERSEY 08302