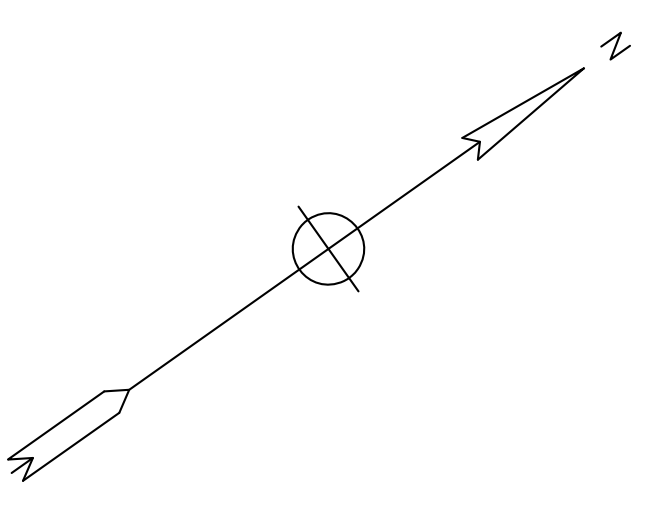
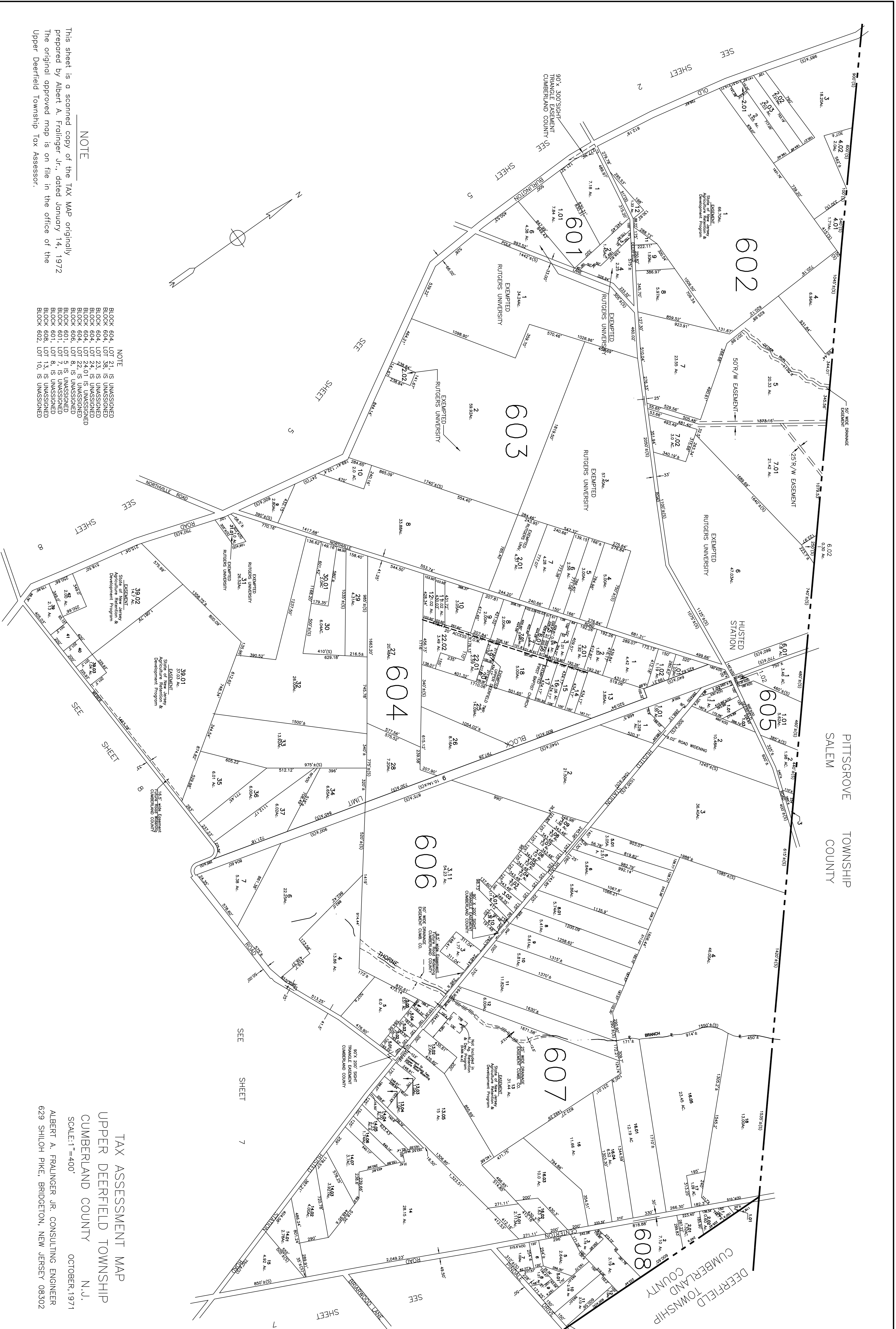


PITTSROVE TOWNSHIP
SALEM COUNTY



NOTE

This sheet is a scanned copy of the TAX MAP originally prepared by Albert A. Frainger Jr., dated January 14, 1972. The original approved map is on file in the office of the Upper Deerfield Township Tax Assessor.

NOTE

BLOCK 604, LOT 21, IS UNASSIGNED
 BLOCK 604, LOT 38, IS UNASSIGNED
 BLOCK 604, LOT 23, IS UNASSIGNED
 BLOCK 604, LOT 24, IS UNASSIGNED
 BLOCK 604, LOT 24.01, IS UNASSIGNED
 BLOCK 604, LOT 24.02, IS UNASSIGNED
 BLOCK 604, LOT 24.03, IS UNASSIGNED
 BLOCK 601, LOT 5, IS UNASSIGNED
 BLOCK 601, LOT 7, IS UNASSIGNED
 BLOCK 601, LOT 8, IS UNASSIGNED
 BLOCK 602, LOT 10, IS UNASSIGNED

TAX ASSESSMENT MAP
UPPER DEERFIELD TOWNSHIP
CUMBERLAND COUNTY N.J.

SCALE: 1"=400'
 OCTOBER, 1971
 ALBERT A. FRAINGER JR., CONSULTING ENGINEER
 629 SHILOH PIKE, BRIDGETON, NEW JERSEY 08302