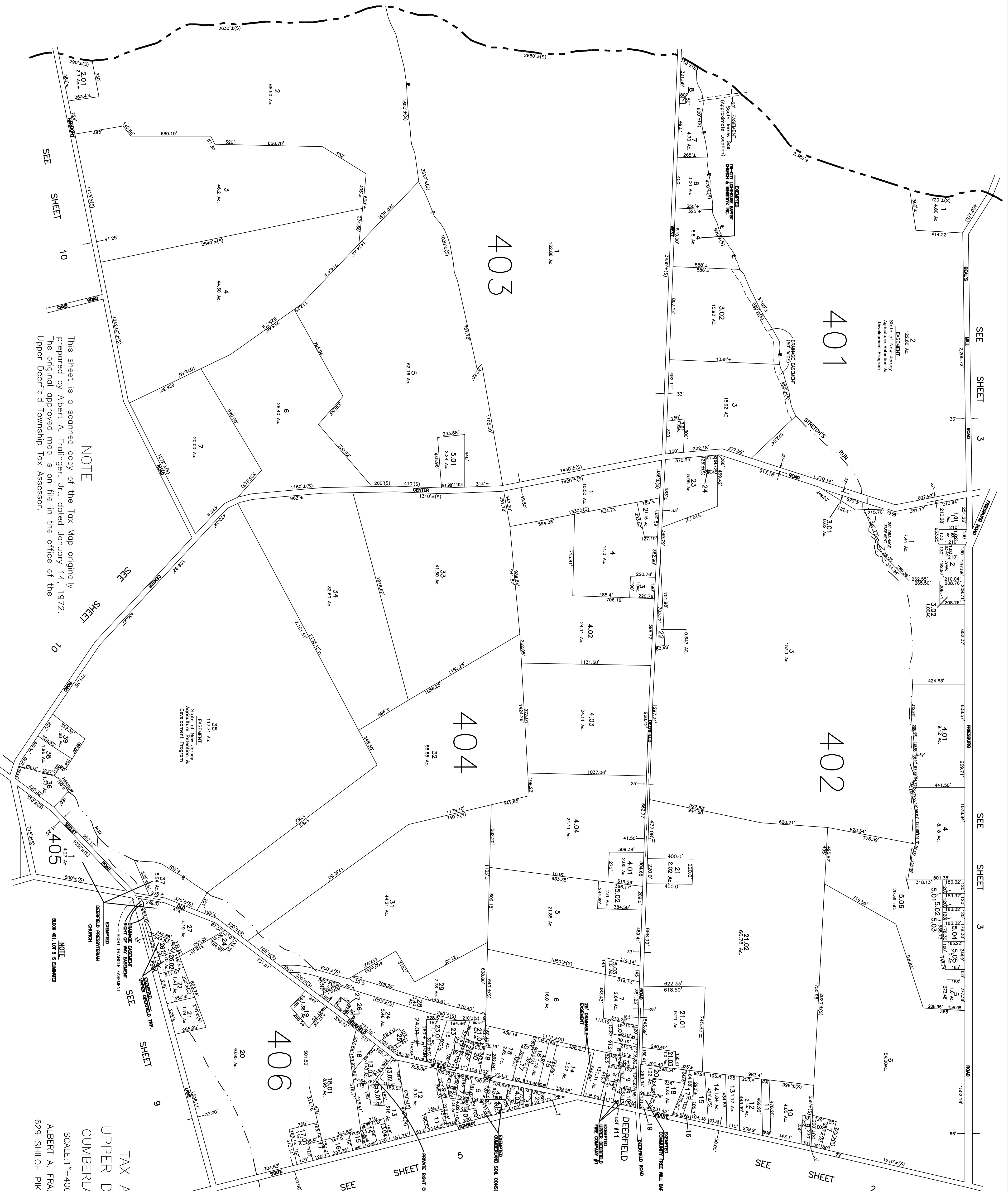


HOPEWELL TOWNSHIP  
CUMBERLAND COUNTY



NOTE

This sheet is a scanned copy of the Tax Map originally prepared by Albert A. Fralinger, Jr., dated January 14, 1972. The original approved map is on file in the office of the Upper Deerfield Township Tax Assessor.

NOTE

SCALE: 1"=400'  
OCTOBER, 1971  
ALBERT A. FRALINGER, JR., CONSULTING ENGINEER  
629 SHILOH PIKE, BRIDGETON, NEW JERSEY 08302

TAX ASSESSMENT MAP  
UPPER DEERFIELD TOWNSHIP  
CUMBERLAND COUNTY  
N.J.

NOTE:  
LOT 23 OF BLOCK 406  
IS UNASSIGNED